

ENVIRONMENTAL CHAMBER MAPPING

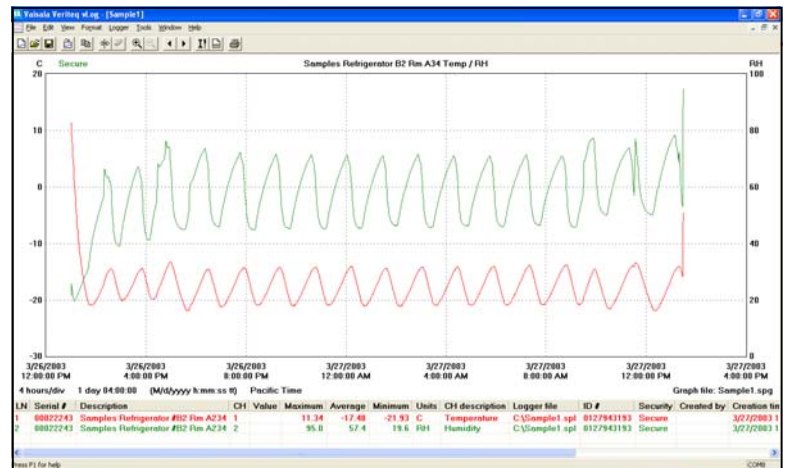


WWW.INSTRUMENTTI.COM

TEMPERATURE • HUMIDITY • CO2

Instrument Technologies, Inc. provides environmental chamber mapping services to meet your needs and requirements. We perform accurate temperature, humidity, and CO2 mapping. Our mapping procedures take into consideration Compliance, Cost, Quality Reporting, Minimum Disruption and Flexibility.

We start by using equipment that is reliable and traceable to the National Institute of Standards & Technologies (NIST). We finish with high quality documentation for every project. Our software allows for total control over temperature points, duration and sample frequency. In between, our experienced and qualified staff will focus on efficiency and flexibility in order to prevent disruption to your process.



Our equipment and reporting software is 21CFR 11 compliant, and suitable for FDA, cGMP, and GLP applications.

Mapping Services:

- Autoclaves
- Centrifuges
- Cold Rooms
- Freezers
- Incubators
- Incubator Shakers
- Ovens
- Refrigerators
- Warehouses
- and more!

Test Types:

- Empty Chamber Thermal Distribution
- Loaded Chamber Thermal Distribution
- Open Door Challenge
- Power Outage Study

Instrument Technologies, Inc. focuses on quality combined with exceptional service! We know how important our services are to your business and stand behind everything we do with a 100% satisfaction guarantee. We look forward to working with you!

CONTACT US TODAY:
1-877-540-4502
SOLUTIONS@INSTRUMENTTI.COM

Corporate Headquarters/Lab: 9225 Chinden Blvd., Suite E—Boise, ID 83714
Washington Office/Lab: 1940 124th Ave., NE—Bellevue, WA 98005